

# Stormwater Management Program

## BRIARCLIFF MANOR SCHOOL DISTRICT NEWSLETTER

Stormwater runoff can be a significant source of water pollution in streams, wetlands, lakes, and rivers. As rainwater and snowmelt travel across parking lots, roadways, and other paved surfaces, it transports chemicals and other pollutants. Stormwater is often directed to streams and other bodies of water, thereby affecting water quality. Stormwater can also be absorbed into the ground, from which groundwater is withdrawn by wells. Implementing effective stormwater management practices—both structural and non-structural—is important to ensure water used for drinking or swimming and other recreational activities remains safe for the public.

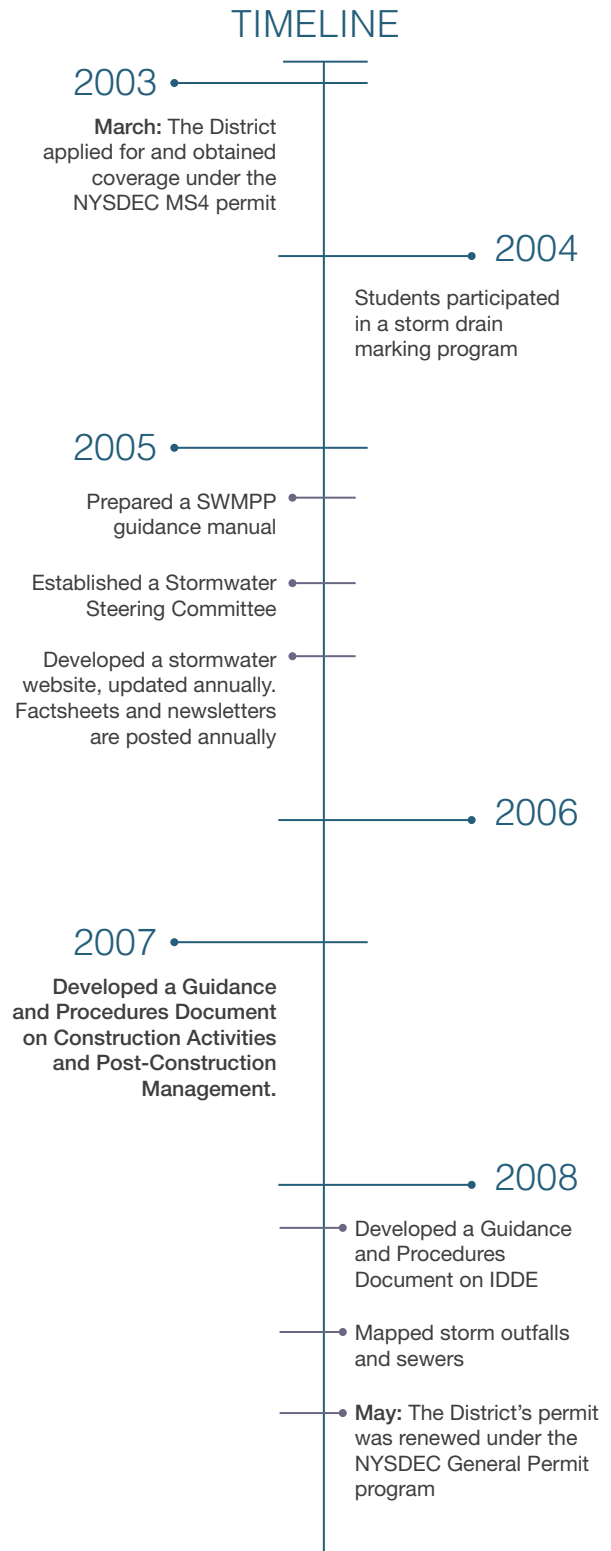
### *Stormwater runoff can be a significant source of water pollution*

The New York State Department of Environmental Conservation (NYSDEC) enforces stormwater management measures for municipalities and other communities (such as school districts) meeting certain population criteria because of their potential effect on water quality. Briarcliff Manor School District (the District) obtained coverage under the General Permit for Stormwater Discharges from Municipal Separate Storm Sewer Systems (MS4) permit, which ensures that an effective stormwater management prevention program (SWMP) is in place.

The District adopted six minimum control measures (MCM), as required by the MS4 permit, which included:

1. Public Education and Outreach;
2. Public Involvement/ Participation;
3. Illicit Discharge Detection and Elimination (IDDE);
4. Construction Site Stormwater Runoff Control
5. Post-Construction Stormwater Management; and
6. Pollution Prevention/Good Housekeeping.

In keeping with these MCMs, the District made the following accomplishments as shown in the timeline.

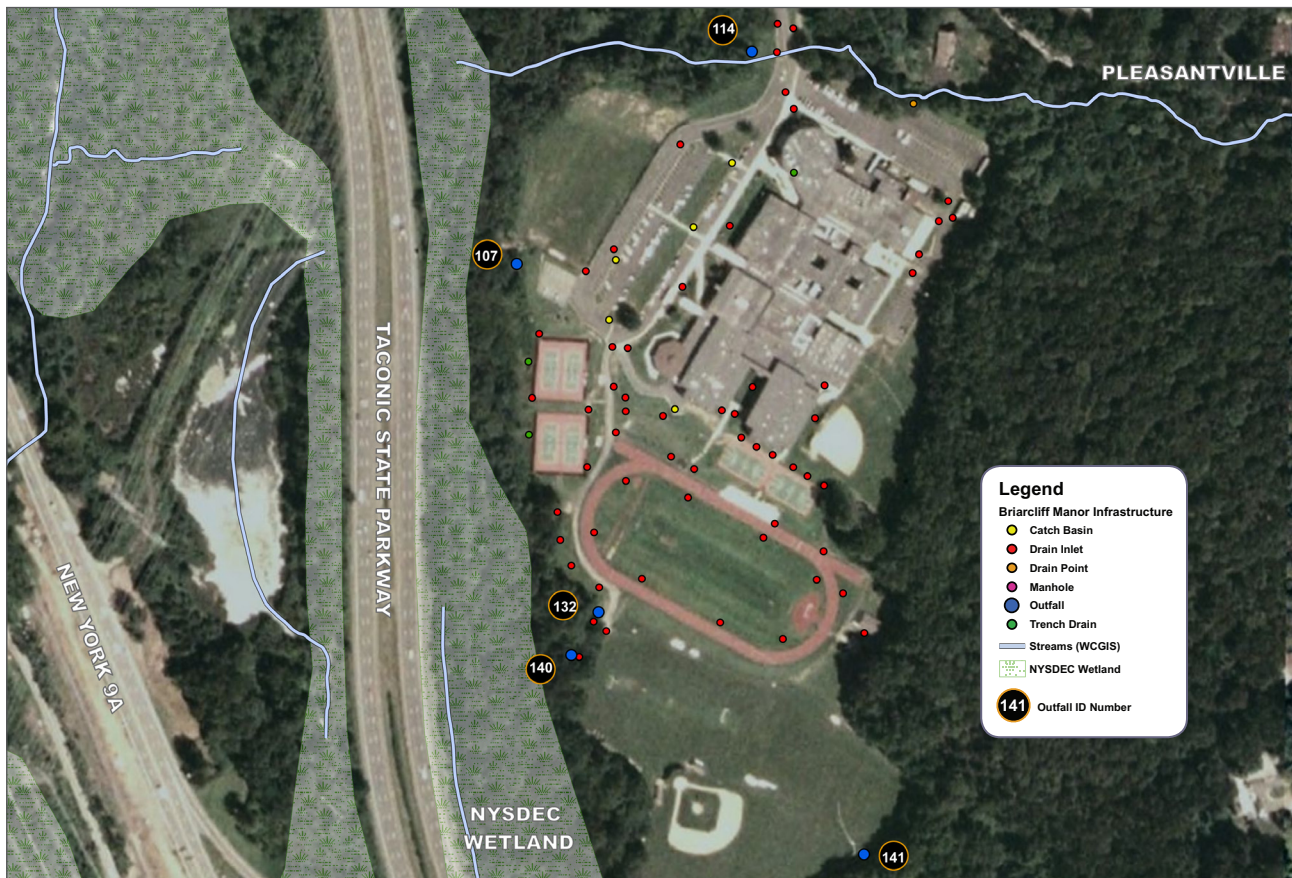


# Stormwater Management Program

## BRIARCLIFF MANOR SCHOOL DISTRICT NEWSLETTER

Consistent with NYSDEC requirements, the District's SWMPP continues to evolve by implementing recommendations from students, staff and public participation:

- Student participation is an important component of the SWMPP. The District educates students on its stormwater management system in the classroom and through field visits that give students an opportunity to learn firsthand about stormwater management.
- Surveys are distributed to students to reinforce their knowledge of stormwater issues and identify potential areas for improvement in the SWMPP.
- Facilities staff is educated on operation and maintenance procedures through annual training sessions.
- Facilities staff conducts periodic inspections of the stormwater management system to ensure that it is functioning properly and effectively. During inspections, staff look for clogging; presence of oils, grease, and other pollutants in the stormwater; deterioration of system components (i.e. cracking, leaking, etc.); and impacts on surrounding water features, such as streams and wetlands.
- The District is developing a geographic information systems (GIS) database to store and evaluate stormwater management data.
- A stormwater watershed map has been developed and will be posted on the District website. This map will show the contributing drainage areas to each stormwater outfall.
- Quarterly meetings are held by the Steering Committee to monitor the status of the SWMPP and discuss short- and long-term objectives.



Aerial Source – Microsoft Virtual Earth 2009