A black and white portrait of Albert Einstein. He is shown from the chest up, looking slightly to the right of the camera. He has his characteristic wild, white hair and a light beard. His hands are clasped together in front of him, resting on a surface. The background is dark and out of focus.

**“Everybody is a genius. But if you judge a fish by its ability to climb a tree it will live its whole life believing that it is stupid”**

*Albert Einstein*

# Educational Vision - FPC

*"Every Student, Every Day"*



February 4<sup>th</sup>, 2020







SEATS 66C 44A

USDOT168429  
MC 798057









ALL  
SE  
MATH  
VERY  
DAY



PLAY LIKE  
A CHAMPION  
TODAY



CHAMPION PRIZES IN SPORTS



CALENDAR

You'll always  
miss 100%  
of the shots  
you don't  
take.

WESLEY  
WINDHAM







“Space impacts behavior.”

– *Academy of Neuroscience for Architecture*





# Maximizing Student Success

*A commitment to student success means supporting students in multiple ways across all domains. This includes a focus on the physical environment which can lead to increased student engagement, performance and satisfaction.*

*(Pascarella & Terenzini, 2005)*



# Exit Outcomes for Students

- *Happy, confident, humble, and well-adjusted*
- *Owners of their learning opportunities*
- *Creative thinkers and problem solvers*
- *Information literate and media savvy*
- *Communicators and collaborators*
- *Independent life-long and life-wide learners*
- *Academically strong and well-rounded*
- *College ready*
- *Possess personal goals and ambition*
- *Graduates who are “makers” and “doers”*





# *Intelligence...*

*Our goal is to maximize the possibilities for those we serve – because that's what smart organizations do!*

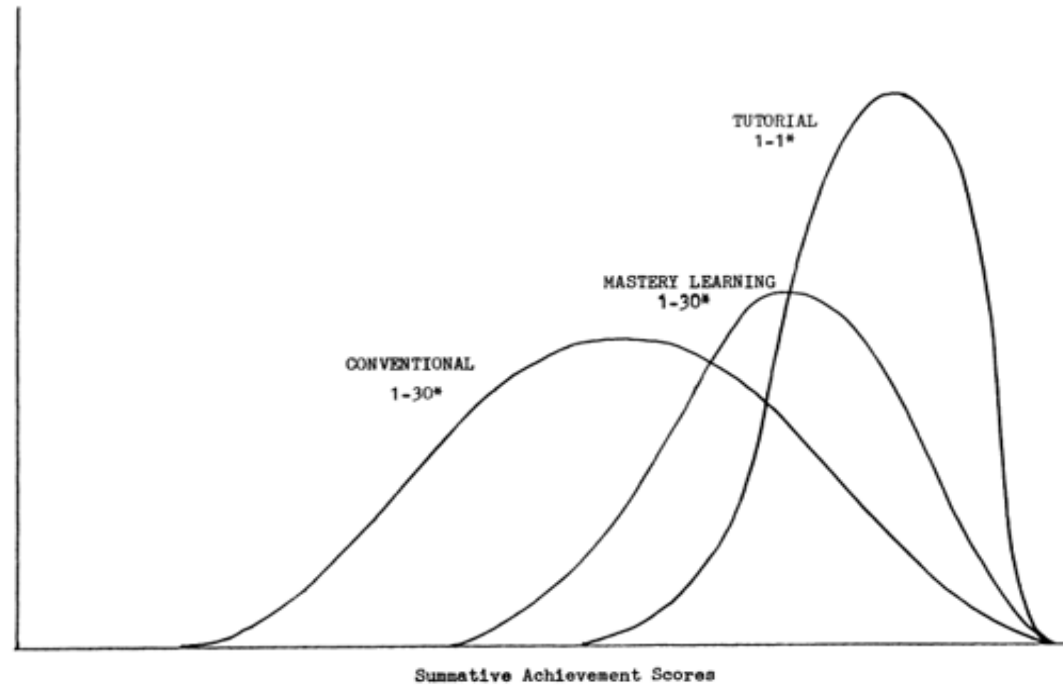
$$\mathbf{F} = T \nabla S_{\tau}$$



# 2 Sigma Problem

## Benjamin Bloom, 1984

**FIGURE 1.** Achievement distribution for students under conventional, mastery learning, and tutorial instruction.



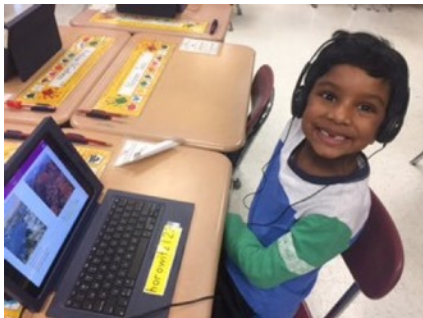
\*Teacher-student ratio

June/July 1984

5

$$F = T \nabla St$$



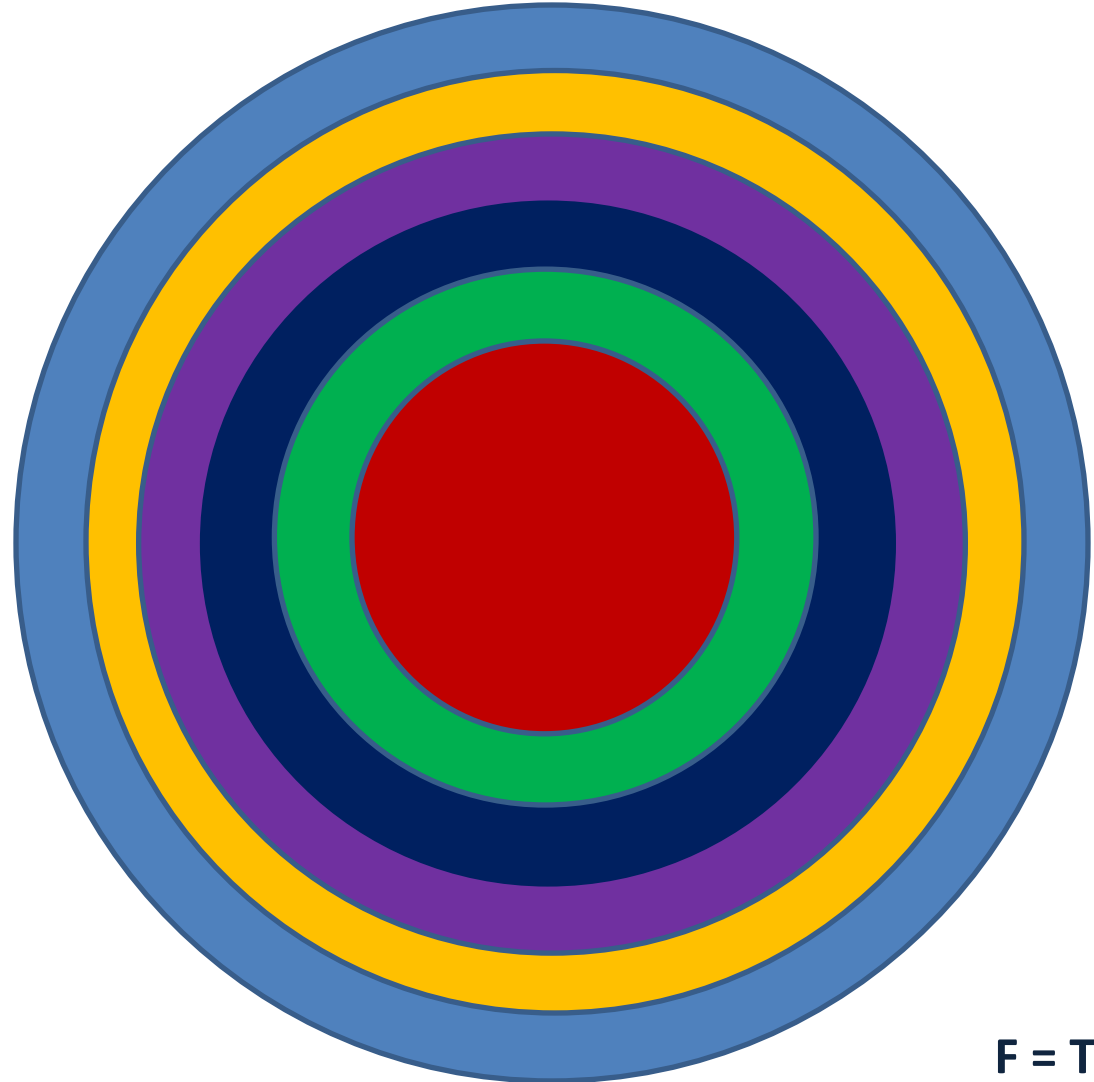






# Design Thinking

- *Empathize*
- *Define*
- *Ideate*
- *Prototype*
- *Test*
- *Actuate*

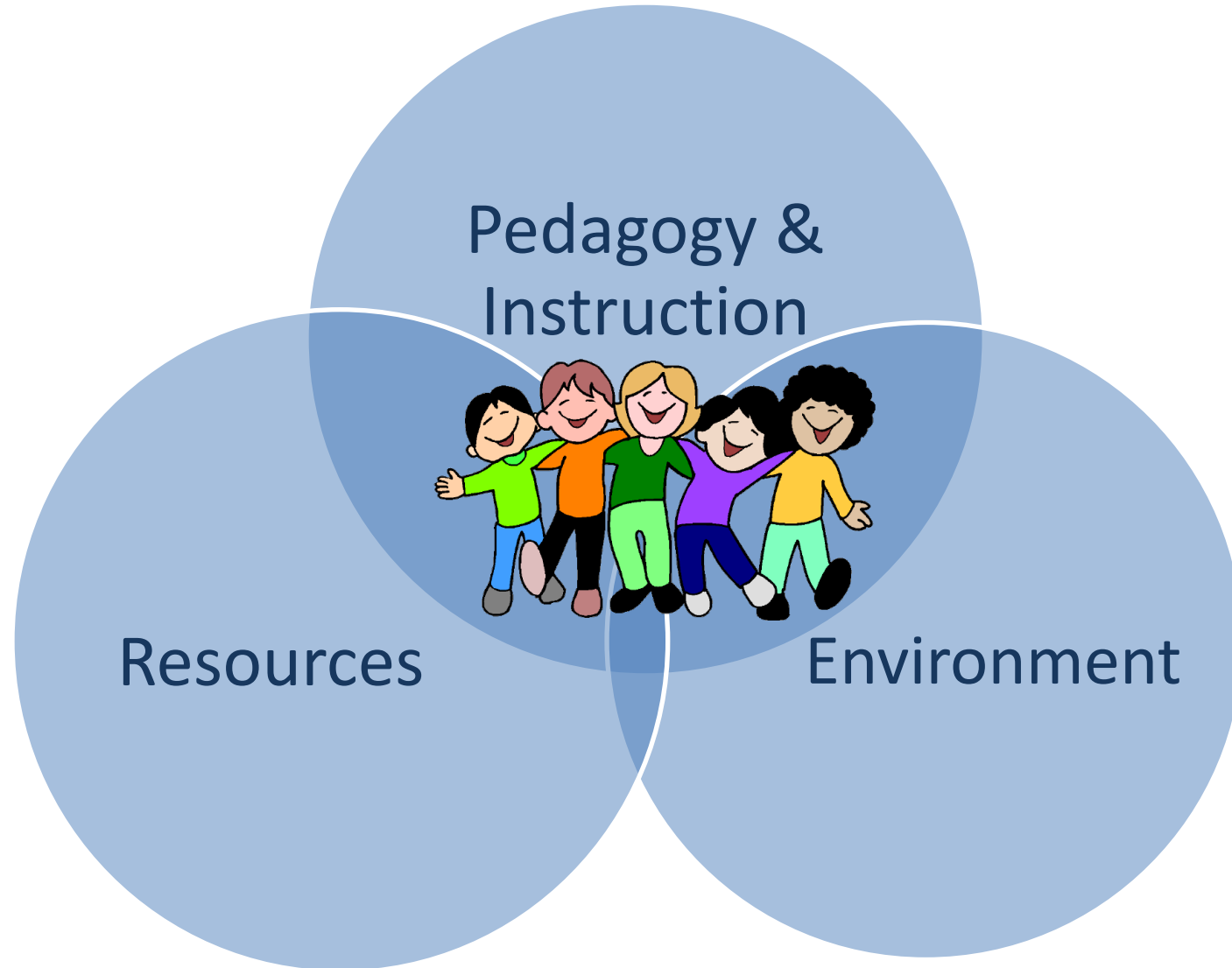


$$F = T \nabla S_t$$





# The Keys to our School Success



$$F = T \nabla S \tau$$



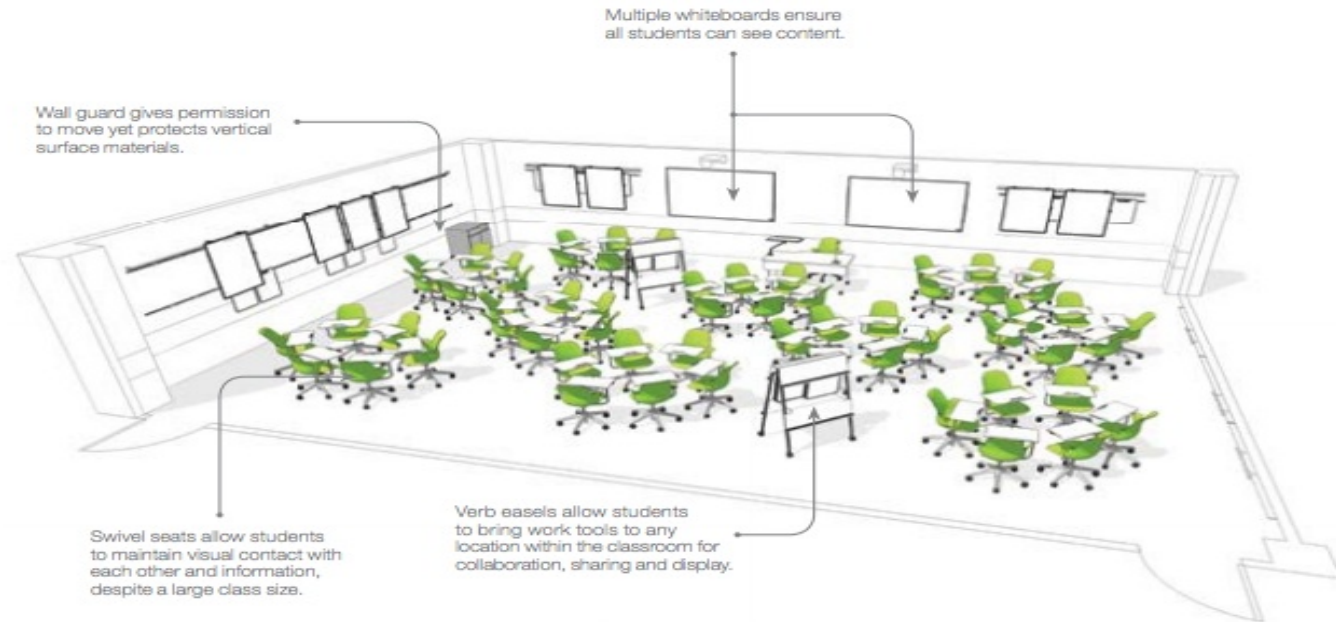
*It's about teaching and learning*





# Space and the Physical Environment

*Leveraging our learning spaces as a strategic tool to increase classroom learning.*



$$F = T \nabla S \tau$$

**1955 Studebaker**



**1971 Continental**



**2018 Grocery Store!**

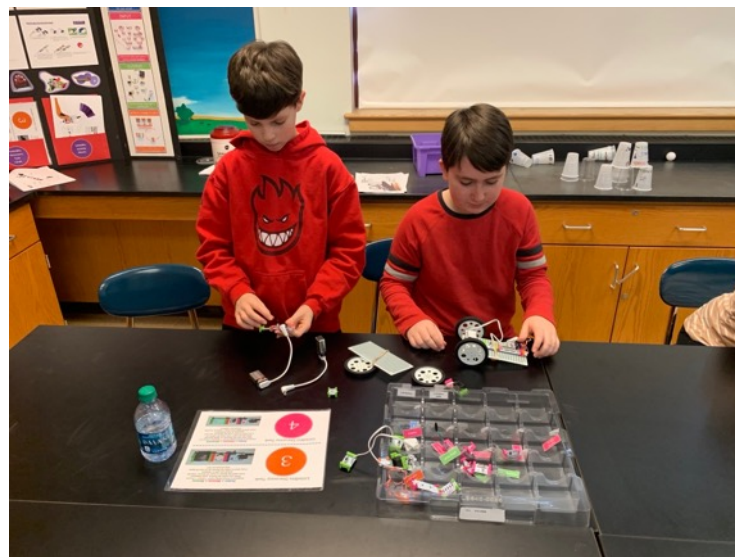
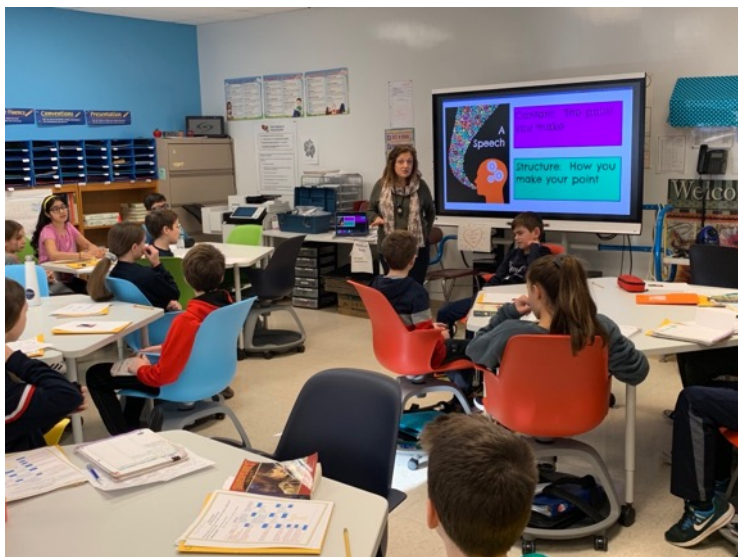


$$F = T \nabla S \tau$$





Todd

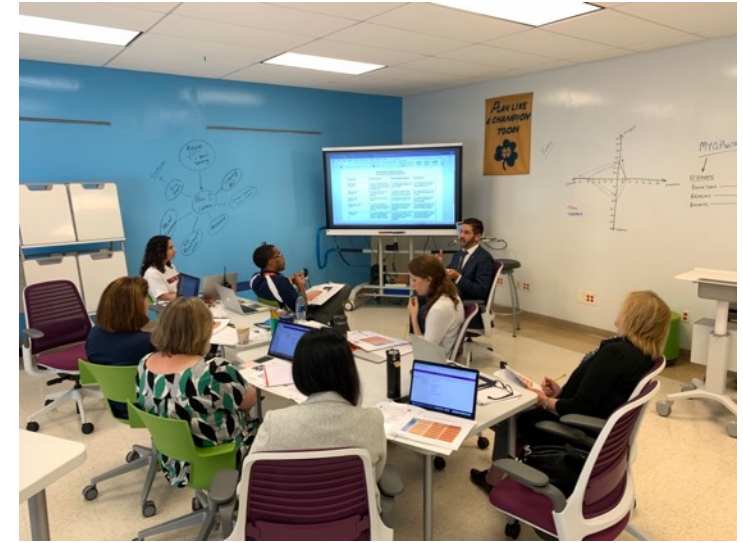
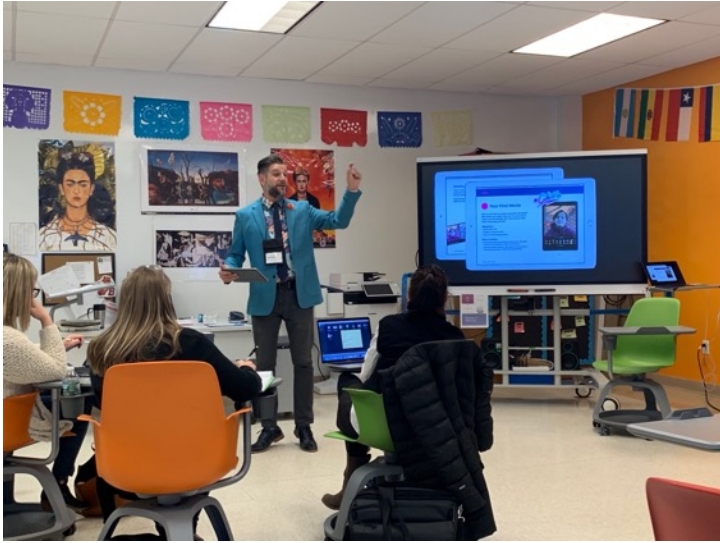


# Middle School





# High School



# Professional Development





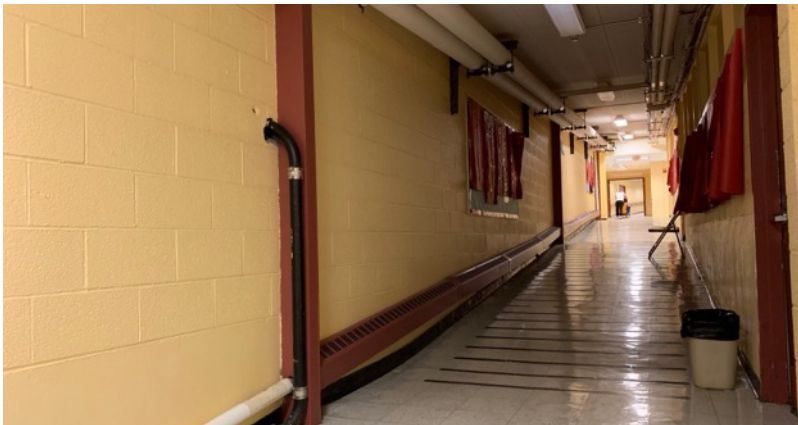
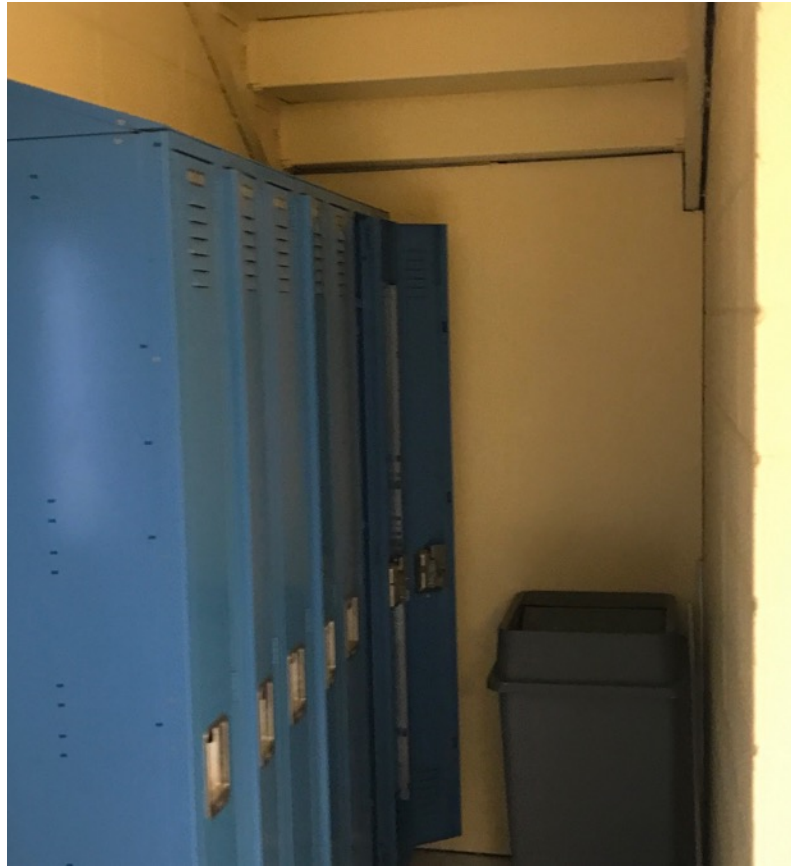
# Students as Teachers & Experts

---



# The Library Media Center





*A Safe Environment*

---

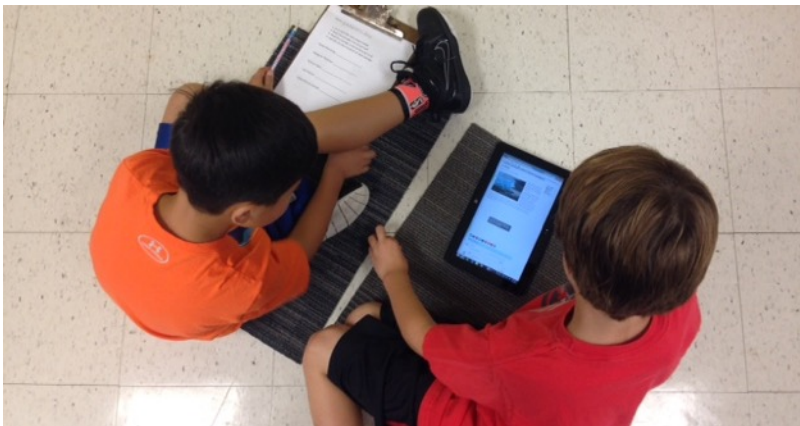
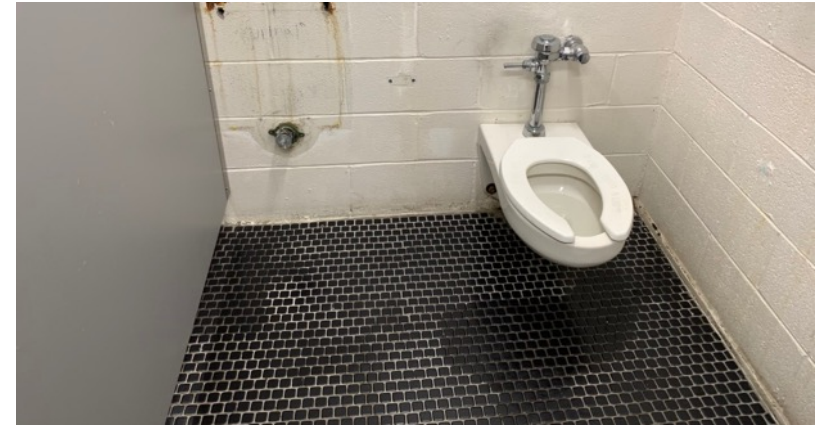
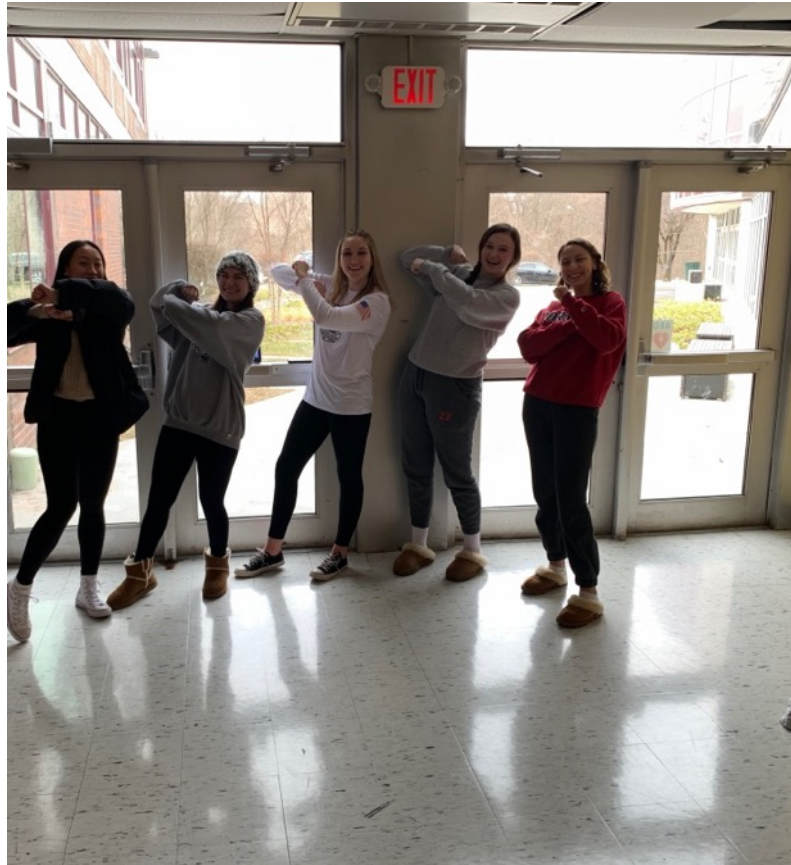




*Secure Facilities*

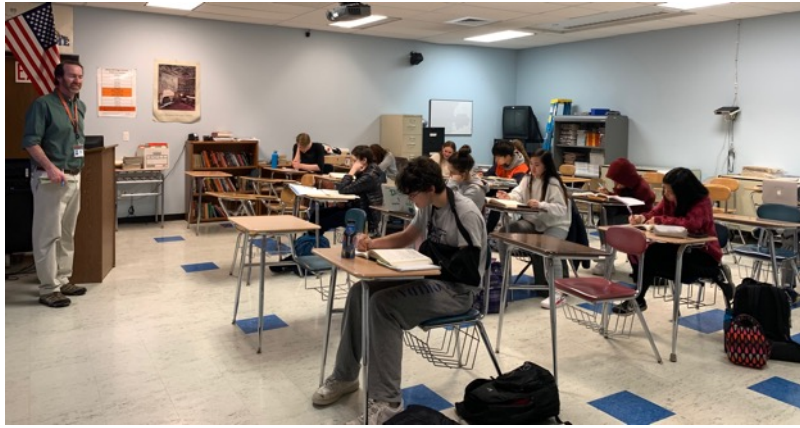
---





*Educationally Congruent*





# *Interior Spaces & Layout (HS)*

*Safety, Security, Educational Congruity*





# *The HS Guidance Center*

*Security, Educational Congruity*



# *The Maresca Center*

*Safety, Security, Educational Congruity*





# *Cafeteria (HS)*

---

*Safety, Security*





# *The Library Media Center*

*Educational Congruity*





# *Science Classrooms*

---

*Safety, Educational Congruity*





# *Interior Spaces & Layout (Todd)*

*Safety, Security, Educational Congruity*





# *Todd Gymnasium*

*Safety, Security, Educational Congruity*





# Crime Prevention through Environmental Design

(CPTED)





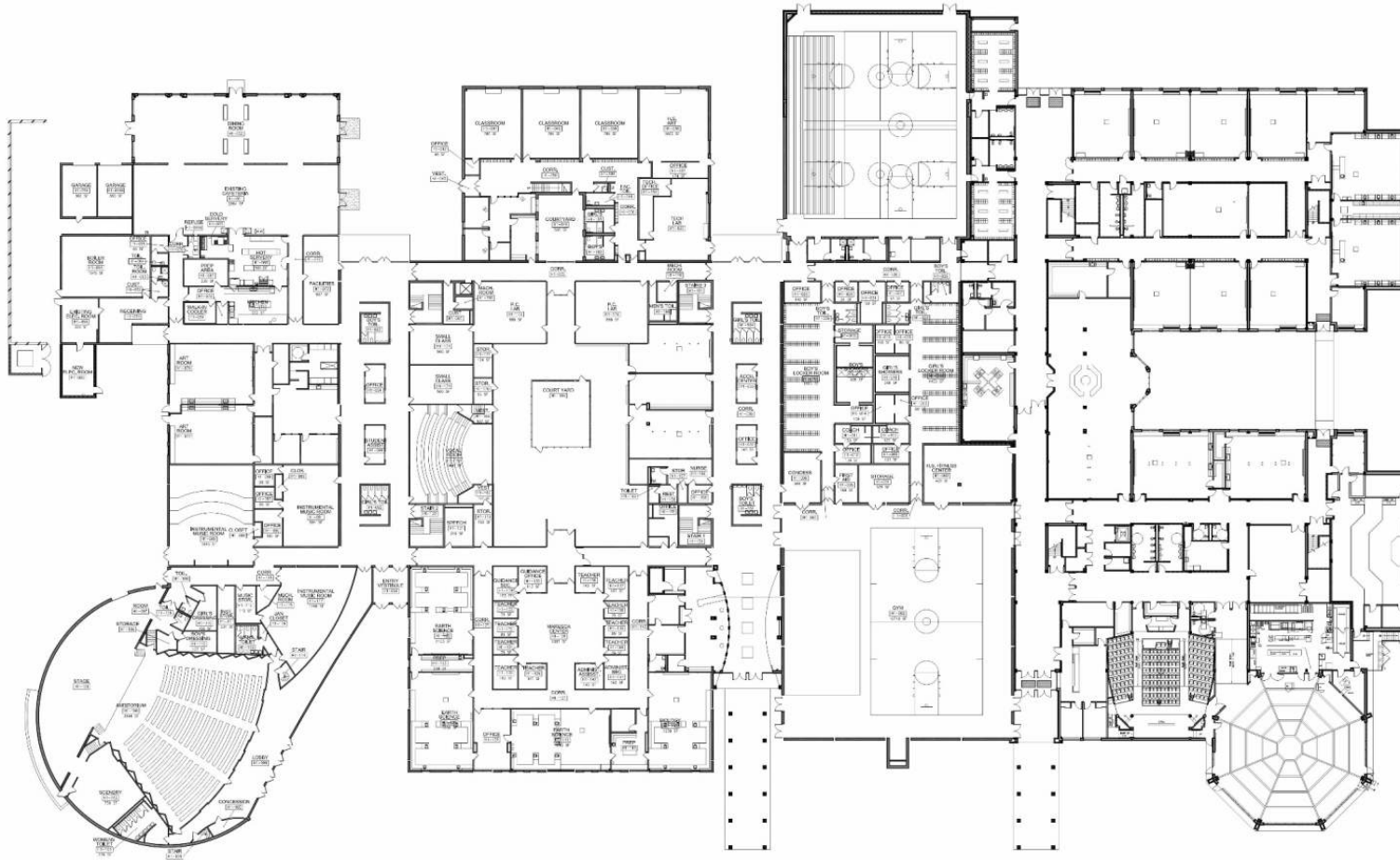
# Crime Prevention Through Environmental Design

The principles of CPTED may benefit schools by:

- *Managing access to student areas – **Layout\****
- *Minimizing opportunities for out-of-sight activities – **Sightlines\****
- *Fostering a sense of physical and social order – **Orientation\****
- *Creating a warm and welcoming environment – **Aesthetic Imprint***
- *Creating a sense of ownership by students – **Work, Responsibility & Autonomy***
- *Sending positive messages to students - **Culture***
- *Maximizing the presence of authority figures – **Vigilant and Trustworthy Adults***



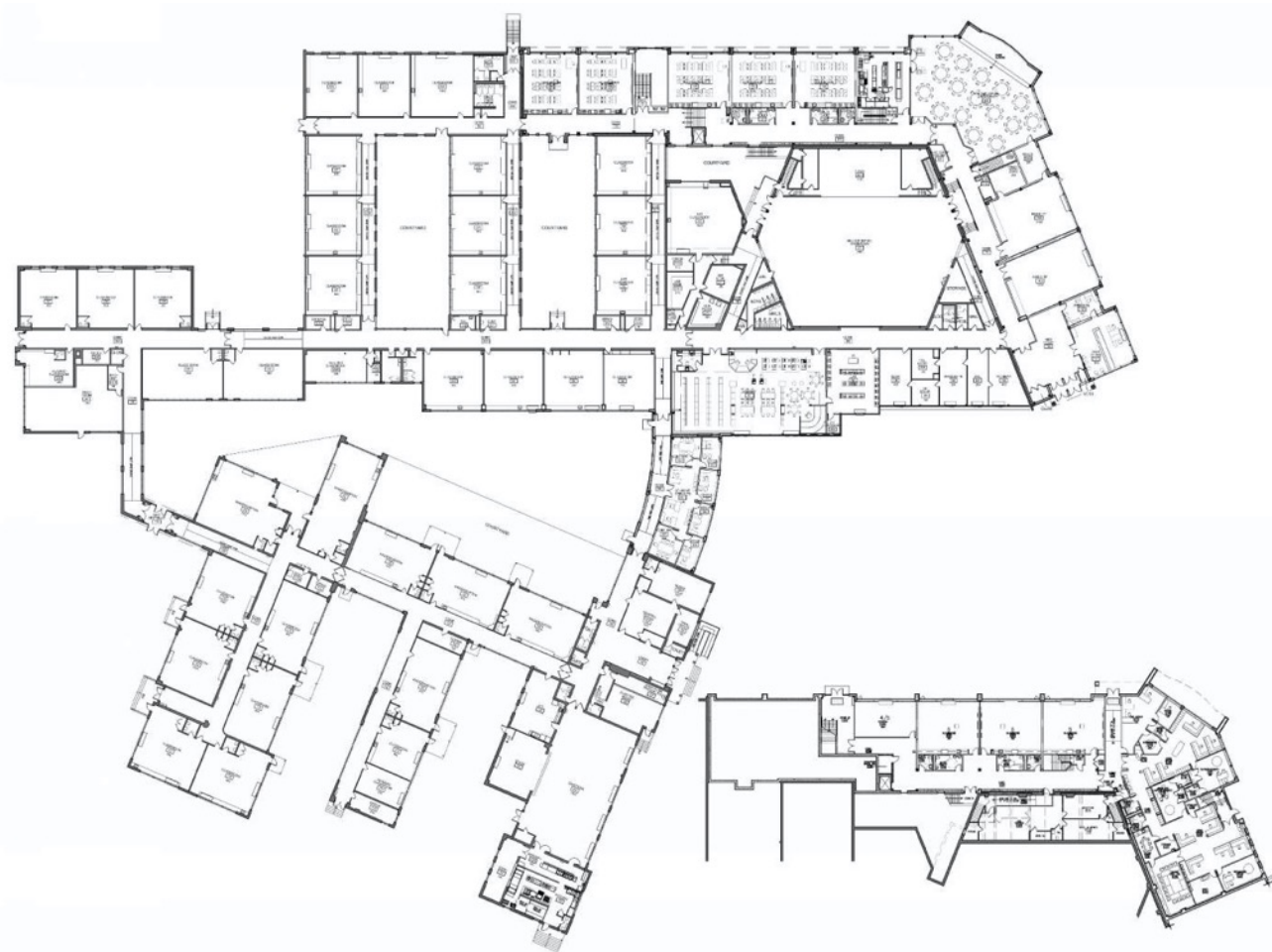
# HS/MS EXISTING FIRST FLOOR PLAN - OVERALL







# TODD ES EXISTING FLOOR PLAN - OVERALL









# Questions









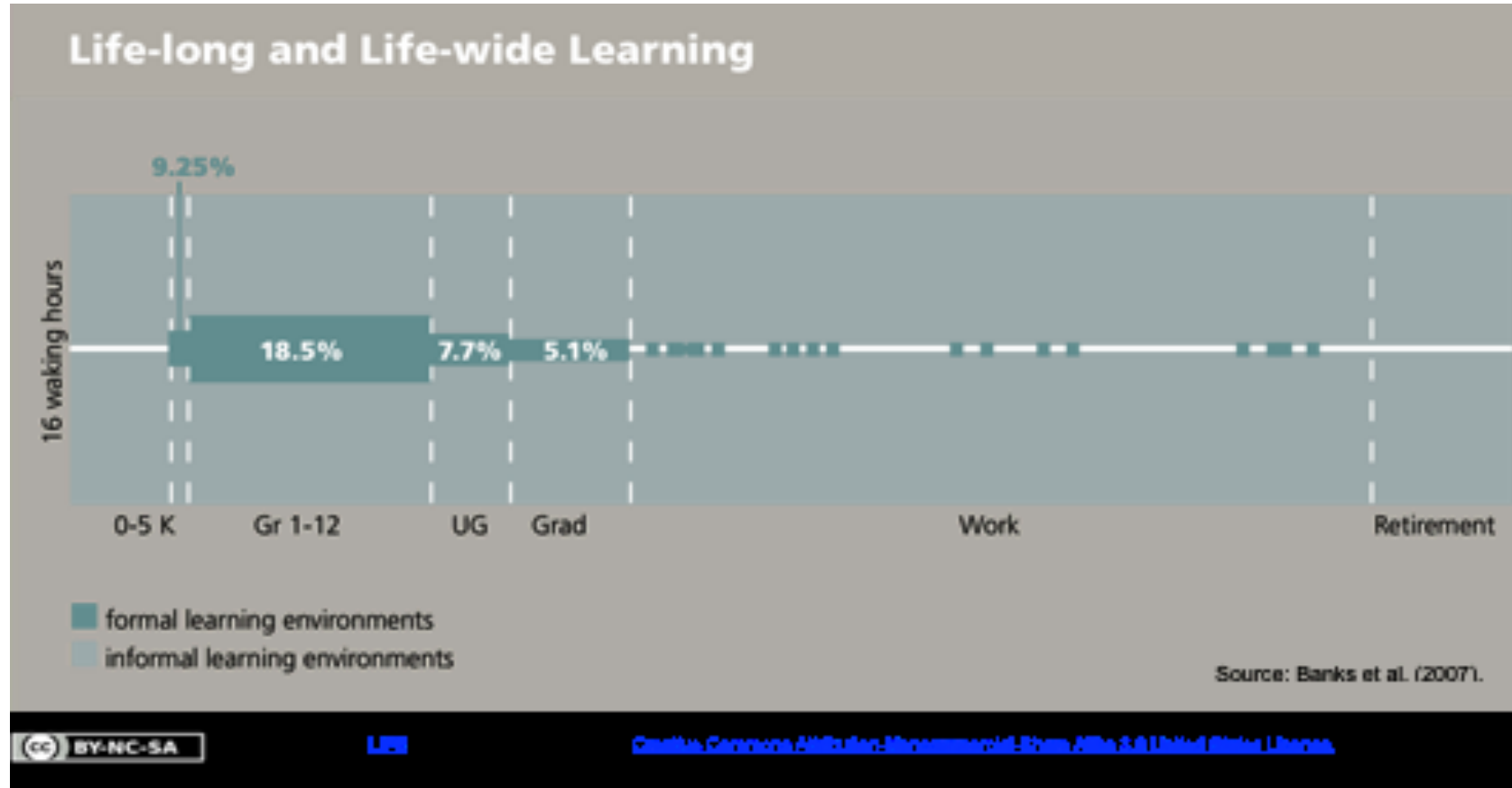
How do we bring the  
world to our classrooms?





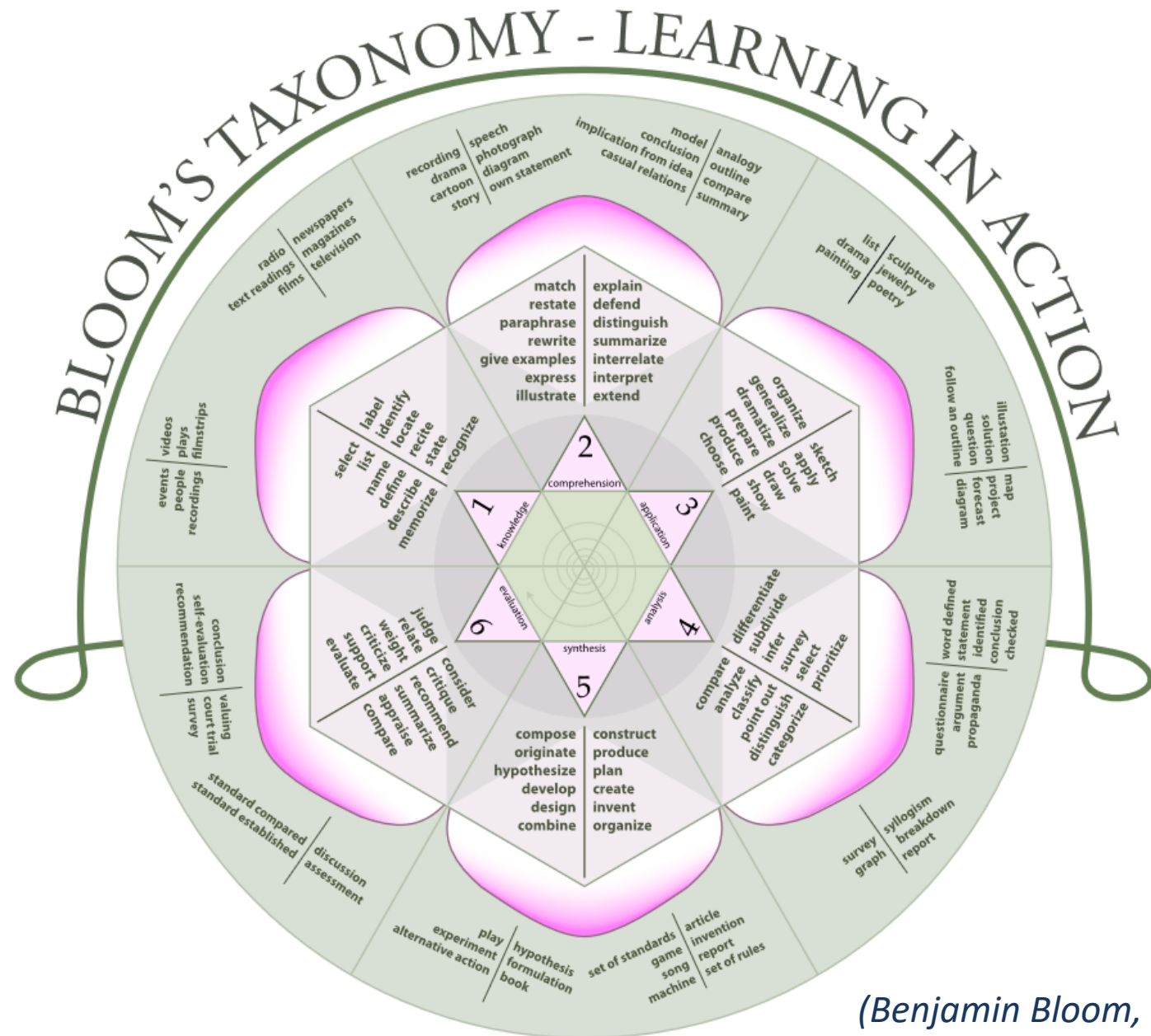


# When Do We “Learn”?



Source: US Department of Education





(Benjamin Bloom, 1965)

# Maslow's Hierarchy

